



Corin

LARS™
Ordering information



LARS™

Ordering information

LARS is a range of synthetic ligament augmentation and reconstruction devices, suitable for a wide variety of applications from ACL and PCL reconstruction to ankle and shoulder repairs.

LARS ligaments are intended for the intra or extra-articular reconstruction of ruptured ligaments, designed to mimic the normal anatomic ligament fibres. The intra-articular longitudinal fibres resist fatigue and allow fibroblastic ingrowth, the extra-articular woven fibres provide strength and resistance to elongation.

LARS ligaments can be used in conjunction with the remnants of the ruptured ligament, or as reinforcement of an autologous reconstruction. In both cases LARS ligaments allow the original ligament tissues to heal during the immediate post-operative period, when an excess of traction would otherwise elongate the tissue.

Use of LARS ligaments allows immediate restoration of knee kinematics by re-centring the knee. LARS ligaments are used as internal fixation devices to aid the healing process.

These ligaments must always be placed in the joint in an anatomical or isometric position. The diameter of the bony tunnels must correspond to the specific technique for each type of ligament and as a general rule should be as small as possible.

LARS can be used for extra-articular reconstructions in tendon repairs such as Achilles tendon, patella tendon, biceps tendon, rotator cuff etc.

Mechanical *in vivo* tests for resistance, fatigue and creep have shown that LARS ligaments are highly effective ligament reconstruction and augmentation devices and mid-term clinical results are excellent^{1,2,3,4,5,6,7}.

JointResponse

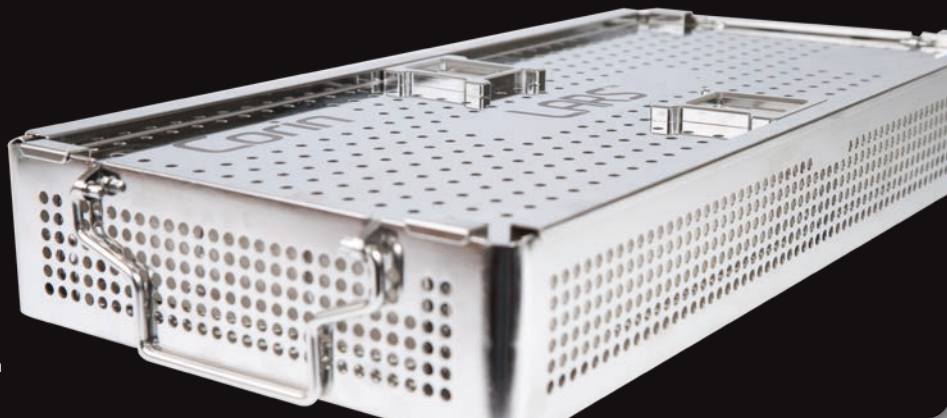
Corin loan service

Corin's **JointResponse** loan service provides a wide range of innovative reconstructive orthopaedic solutions on a short-term loan basis. Implants spanning a range of sizes and associated instrumentation will be dispatched to your hospital for the duration of surgery and then returned back to Corin.

Our highly trained and professional customer support team work together with you to understand your requirements, delivering a personal level of service to meet the exact needs of all our individual customers.

Loan kits will be sent out to you on a guaranteed next morning delivery; however we can also fast-track kits on request if your requirements are more urgent.

Instrumentation is maintained to the highest standards and supplied in high quality, custom-built flight cases. Our comprehensive storage system and excellent cleaning facilities ensure that all orders are serviced promptly and accurately. All loan kits are supplied fully-functional and de-contaminated.



Contact us:

t: +44 (0)1285 884 777

f: +44 (0)1285 884 776

e: jointresponse@coringroup.com

LARS ligament portfolio	6
Knee	6
Ankle	7
Shoulder and hip	7
Elbow and tumour	7
LARS ligament implant kits	12
Ligament options knee	12
Detailed product information knee	13
Ligament options shoulder and hip	16
Detailed product information shoulder and hip	17
Ligament options ankle	18
Detailed product information ankle	19
Ligament options various	20
Detailed product information various	21
LARS ligament instrument kits	22
LARS ACL kit	22
LARS MCL kit	23
LARS PCL and multi-ligament kit	24
LARS rotator cuff and hip kit	26
LARS ACJ kit	27
LARS ankle kit	28
LARS patella, quadriceps and tumour kit	29

Please note: Both implant and instrument kit contents detailed in this guide apply to Corin **JointResponse** loan service kits only and are not reflective of existing long-term consignment kits as the latter have been tailored to individual customer requirements.

Knee

Ligament	Code
ACL - AC 80 (Left)	104.105
ACL - AC 80 (Right)	104.106
ACL - AC 100 2BL (Left)	104.100
ACL - AC 100 2BR (Right)	104.101
ACL 100 short femoral insert - AC 100 2BL/S (Left)	104.090
ACL 100 short femoral insert - AC 100 2BR/S (Right)	104.091
ACL - AC 120 2BL (Left)	104.112
ACL - AC 120 2BR (Right)	104.111
ACL - AC 160 2BL (Left)	104.114
ACL - AC 160 2BR (Right)	104.113
ACL for transverse fixation with free fibres - AC 30 DB	104.141
ACL for transverse fixation with free fibres - AC 40 DB	104.137
ACL for transverse fixation with free fibres - AC 50 DB	L020505
ACL for transverse fixations - RO6 x 400/6mm	104.133
Chronic ACL and PCL tube for allograft or autograft - Actor 8	104.108
Chronic ACL and PCL tube for allograft or autograft - Actor 10	104.110
Posterior cruciate - PC 60	104.102
Posterior cruciate - PC 80	104.103
Medial collateral - MCL 32	104.119
PPLY FP 80 (One arm 50mm, the other 30mm)	104.118
Y ligament for posterolateral corner and PPLY 100 (Both arms 50mm)	104.104
Y ligament for posterolateral corner and LCL/PPLY 100 (One arm 70mm, the other 50mm)	104.117
Patella - PTR 30	104.120
Quadriceps tendon - IT 32 RA	104.135

Ankle

Ligament	Code
Achilles tendon - AT 60	104.350
Lateral instability - LLE A44	104.107

Shoulder and hip

Ligament	Code
Acromioclavicular - LAC 20 CK	104.115
Acromioclavicular - LAC 30 CK	104.116
Rotator cuff - CR 25	104.225
Rotator cuff - CR 30	104.230

Elbow and tumour

Ligament	Code
IT 20 RA	104.132
Tube - R06 x 400/S	104.136
Band - R06 x 400 (6cm)	104.131

Ligaments from a particular joint portfolio may also be used for certain indications in a different joint, for example the LARS ACJ ligaments can be used in the knee joint to reconstruct the patella tendon or posterolateral corner of the knee. For further information on applications of each ligament type please refer to the ligament options section of this guide.

Knee



PC 60
PCL



PC 80
PCL



MCL 32
Medial collateral



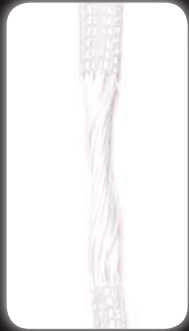
PPLY 80
50/30mm



PPLY 100
50/50mm



PPLY 100
70/50mm



PTR 30
Patella



IT 32 RA
Quadriceps tendon

ACL options



AC 80



AC 100 2B



AC 100 2BR/S



AC 120



AC 160



AC 30 DB



AC 40 DB



AC 50 DB



R06 x
400/6mm
For use with
transverse fixation



Actor 8
Chronic ACL/PCLs



Actor 10
Chronic ACL/PCLs

Ankle



AT 60
Achilles



LLE A44
Lateral instability

Shoulder and hip



LAC 20 CK
Acromioclavicular



LAC 30 CK
Acromioclavicular



CR 25
Rotator cuff and hip



CR 30
Rotator cuff and hip

Elbow



IT 20RA

Tumour reconstruction



R06 x 400/S
Tumour tube



R06 x 400 (6mm)
Tumour band

Fixation



Ti screw
4.7 and 5.2 mm
diameter



Ti screw
6.0, 7.0, 8.0, 9.0 and
10.0 mm diameter



CoCr staple
8.0 x 20 mm

Fixation	
Titanium Screws	Code
4.7mm x 15mm	104.470
5.2mm x 15mm	104.515
5.2mm x 20mm	104.520
5.2mm x 30mm	104.530
6.0mm x 30mm	104.630
7.0mm x 25mm	104.725
7.0mm x 30mm	104.730
8.0mm x 25mm	104.825
8.0mm x 30mm	104.830
9.0mm x 25mm	104.925
9.0mm x 30mm	104.930
10.0mm x 20mm	408.120
10.0mm x 25mm	408.125
10.0mm x 30mm	408.130
10.0mm x 35mm	408.135
LARS ligament staple (CoCr) 8 x 20mm	104.002

Anterior cruciate ligament

Scaffold

Screw/staple fixation

AC 80
AC100 short
AC100
AC120
AC160

Transverse fixation

AC30DB
AC40DB
AC50DB

Augment

Screw/staple fixation

Actor 8
Actor 10

Transverse fixation

R06 X 400 (6 mm)

Implants kit 104,993
Instruments kit 204,993

Medial collateral ligament

Screw/staple fixation
MCL 32

Implants kit 104,994
Instruments kit 204,994

Anterior cruciate ligament

Ligaments	Amount	Strength (N)	Tunnel Ø (mm)	Ligament Ø	Screw size (mm)
AC80L	1	3500	7.0	7.5	8.0-9.0
AC80R	1	3500	7.0	7.5	8.0-9.0
AC100 2BL Short	1	3000	7.5 or 8.0	8.0	8.0-10.0
AC100 2BR Short	1	3000	7.5 or 8.0	8.0	8.0-10.0
AC100 2BL	1	4000	7.5	8.0	8.0-10.0
AC100 2BR	1	4000	7.5	8.0	8.0-10.0
AC120 2BL	1	4500	7.5 or 8.0	8.5	8.0-10.0
AC120 2BR	1	4500	7.5 or 8.0	8.5	8.0-10.0
AC160 2BL	1	5000	9.0	9.5	10.0
AC160 2BR	1	5000	9.0	9.5	10.0
AC30DB	1	1500	6.0	4.0	7.0-8.0
AC40DB	1	1700	7.0 or 7.5	5.0	8.0-10.0
AC50DB	1	2300	7.0 or 7.5	5.0	8.0-10.0
R06 x 400/6mm	1	400	7.5 or 8.0	6.0 width	8.0-9.0
Actor 8	1	1800	7.5 or 8.0	8.5	8.0-10.0
Actor 10	1	2000	9.0 or 10.0*	8.5	10.0-11.0*
PC60	1	2500	6.0	6.5	7.0-8.0
PC80	1	3500	6.0 or 7.5	7.7	7.0-9.0

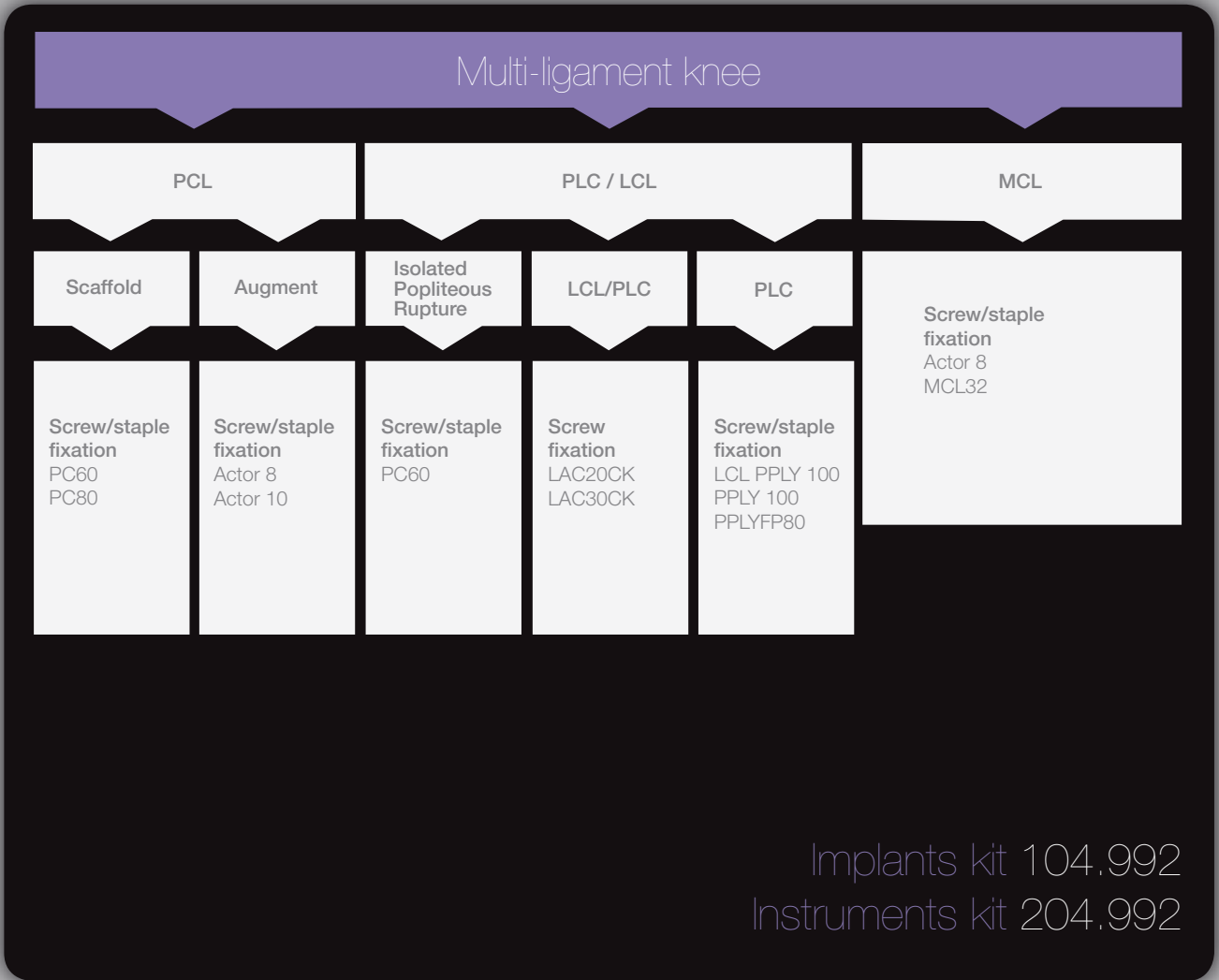
Screws (mm)	Amount
6.0x30	2
7.0x25	2
7.0x30	2
8.0x25	2
8.0x30	2
9.0x25	2
9.0x30	2
10.0x30	2
8.0x20 Staple	2

*Not supplied in kit. Please use routinely available cannulated drill or non-resorbable metal screw of said diameter for this step

Medial collateral ligament

Ligaments	Amount	Strength (N)	Tunnel Ø (mm)	Ligament Ø	Screw size (mm)
MCL32	2	1500	5.0	4.5	6.0-7.0

Screws (mm)	Amount
6.0x30	2
7.0x30	2
8.0x30	1
9.0x30	1
8.0x20 Staple	6



Ligaments	Amount	Strength (N)	Tunnel Ø (mm)	Ligament Ø	Screw size (mm)
PC60	1	2500	6.0	6.5	7.0-8.0
PC80	1	3500	6.0 or 7.5	7.7	7.0-9.0
PPLY 100	1	4000	7.5,6.0	8.0 and 6.0	7.0-9.0
LCL PPLY 100	1	4000	7.5, 6.0, 5.0	8.0, 6.0, 5.0	6.0-9.0
PPLY FP80	1	3500	7.5, 6.0, 4.0*	7.5, 6.0, 4.0	5.2-9.0
LAC20CK	1	1000	3.5	4.0	4.7
LAC30CK	1	1500	4.5	5.0	5.2
Actor 8	1	1800	7.5 or 8.0	8.5	8.0-10.0
Actor 10	1	2000	9.0 or 10.0*	8.5	10.0-11.0*
MCL32	2	1500	5.0	4.5	6.0-7.0

*Not supplied in kit. Please use routinely available cannulated drill or non-resorbable metal screw of said diameter for this step

Screws (mm)	Amount
4.7x15	2
5.2x15	2
5.2x20	2
5.2x30	2
6.0x30	2
7.0x25	2
7.0x30	2
8.0x25	2
8.0x30	2
9.0x25	2
9.0x30	2
10.0x30	2
8.0x20 Staple	6

Rotator cuff and hip

Rotator cuff	Gluteal repair	Hip dislocation
Screw/suture fixation CR25 CR30 Tumour band	Screw/suture fixation IT32RA CR25 CR30 Tumour band ACTOR 10	Screw/suture fixation Tumour band

Implants kit 104.997
Instruments kit 204.995

Acromioclavicular joint ligaments

Screw/suture fixation LAC20CK LAC30CK
--

Implants kit 104.999
Instruments kit 204.997

Ligaments	Amount	Strength (N)	Tunnel Ø (mm)	Ligament Ø	Screw size (mm)
CR25	1	700	4.5	25 width	5.2-6.0
CR30	1	1000	4.5	30 width	5.2-6.0
Tumour band	1	4000	N/A	60 width	N/A
IT32RA	1	1500	4.5	20 width	5.2-6.0
Actor 10	1	2000	9.0 or 10.0*	8.5	10.0-11.0*

Screws (mm)	Amount
5.2x15	4
5.2x20	4
5.2x30	4
6.0x30	4

Ligaments	Amount	Strength (N)	Tunnel Ø (mm)	Ligament Ø	Screw size (mm)
LAC20CK	1	1000	3.5	4.0	4.7
LAC30CK	1	1500	4.5	5.0	5.2

Screws (mm)	Amount
4.7x15	3
5.2x15	2
5.2x20	2
5.2x30	2

Ankle

Screw/suture fixation

LLEA44

AT60

Implants kit 104,995

Instruments kit 204,998

Ligaments	Amount	Strength (N)	Tunnel Ø (mm)	Ligament Ø	Screw size (mm)
LLEA44	1	1500	4.5, 5.0	4.5 and 5.5	4.7-6.0
AT60	1	2000	6.0	6.5	6.0-7.0

Screws (mm)	Amount
4.7x15	3
5.2x15	3
5.2x20	3
6.0x30	3
7.0x30	2

Patella ligaments/Quadriceps/Tumours/Elbow

Patella tendon	MPFL	Quadriceps /extensor mechanism	Muscle reinforcement/ tumours/revision	Elbow MCI/ LCL
Screw/suture fixation PTR30 LAC20CK LACK30CK CR25 CR30	Screw/suture fixation PTR30 LAC20CK LAC30CK LLEA44 AT60	Screw/suture fixation IT32RA Tumour band	Screw/suture fixation IT32RA Tumour band Tumour tube	Screw/suture fixation IT20RA

Implants kit 104,996
 Instruments kit 204,996

Ligaments	Amount	Strength (N)	Tunnel Ø (mm)	Ligament Ø	Screw size (mm)
LLEA44	1	1500	4.5 and 5.0	4.5 and 5.5	4.7-6.0
LAC20CK	1	1000	3.5	4.0	4.7
LAC30CK	1	1500	4.5	5.0	5.2
PTR30	1	1500	5.0	4.5	5.2-6.0
Tumour band	1	4000	N/A	60 width	N/A
Tumour tube	1	4000	N/A	42 width	N/A
IT20RA	1	1000	3.5 or 4.5	8 width	4.7
IT32RA	1	1500	4.5	20 width	5.2-6.0
CR25	1	700	4.5	25 width	5.2-6.0
CR30	1	1000	4.5	30 width	5.2-6.0
AT60	1	2000	6.0	6.5	6.0-7.0

Screws (mm)	Amount
4.7x15	2
5.2x20	2
5.2x30	2
6.0x30	3
7.0x30	3
8.0x20mm Staple	4

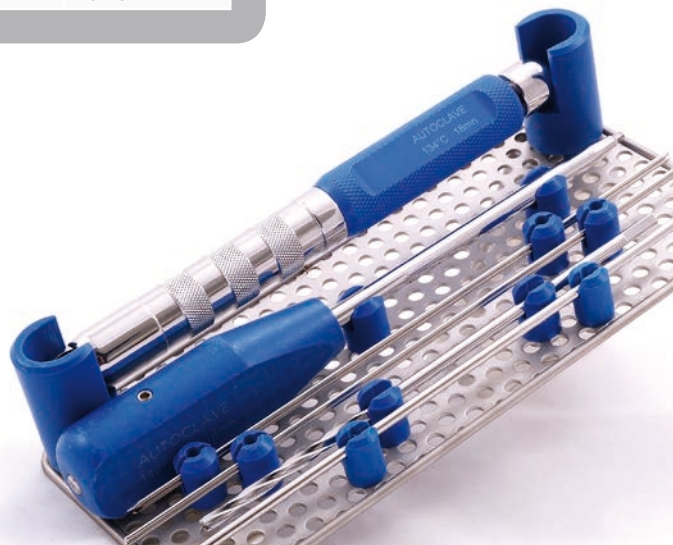
LARS ACL - 204.993

Part	Code
Adjustable guide - AVM01	204.043
8mm Cannulated drill - U01157	204.075
9mm Cannulated drill - U01155	204.076
Cannulated drill bit O/D 6mm I/D 2.7mm - U01152	204.002
Cannulated drill bit O/D 7mm I/D 3.2mm - U01153	204.019
Cannulated drill bit O/D 7.5mm I/D 3.2mm - U01154	204.003
Canula for needle - U01351	204.038
Femoral guide - C26001	204.044
K-Wire guide - O/D 7.4mm I/D 3.2mm - C26003	204.046
K-Wire Ø2mm x 330mm - blunt ends - U01018	104.205
K-Wire Ø2.5mm x 330mm - trocar ends - U01020	104.251
K-Wire Ø3mm x 330mm - trocar ends - U01009	104.301
Ligament cutter	204.020
Ligament traction - U02456	204.014
Needle - Ø1.5 x 330mm (x2) - U01453	204.033
Screwdriver	204.001
Staple impactor - AIAG01	204.135
Telescopic tube - 140mm long retractor - U01304	204.013
Telescopic tube - 150mm long - U01256	204.039
Telescopic tube - 160mm long - U01253	204.040
Telescopic tube - 180mm long - U01252	204.041
Telescopic tube - 300mm long - U01254	204.042
Tibial guide - C26002	204.045
Wire loop - U014011 x5	204.008
Box details	
Outer box	204.901
Tray - D26001	204.913A
Tray - D26002	204.913B



LARS MCL - 204.994

Part	Code
5mm Cannulated drill	204.069
LARS screwdriver - ATVS 35	204.001
Ligament cutter - ACPL 02	204.020
Ligament pins - 2mm x 250mm Blunt – U01004	104.202
Ligament pins - 2mm x 250mm Pointed – U01003	104.201
Ligament puller - U02456	204.014
Staple extractor - AEG01	204.036
Staple impactor - AIAG01	204.035
Telescopic tube small passing cannula	204.037
Wire loop - pack of 5 – U014011	204.008
Box details	
Outer box	204.902
Tray - D32001	204.914

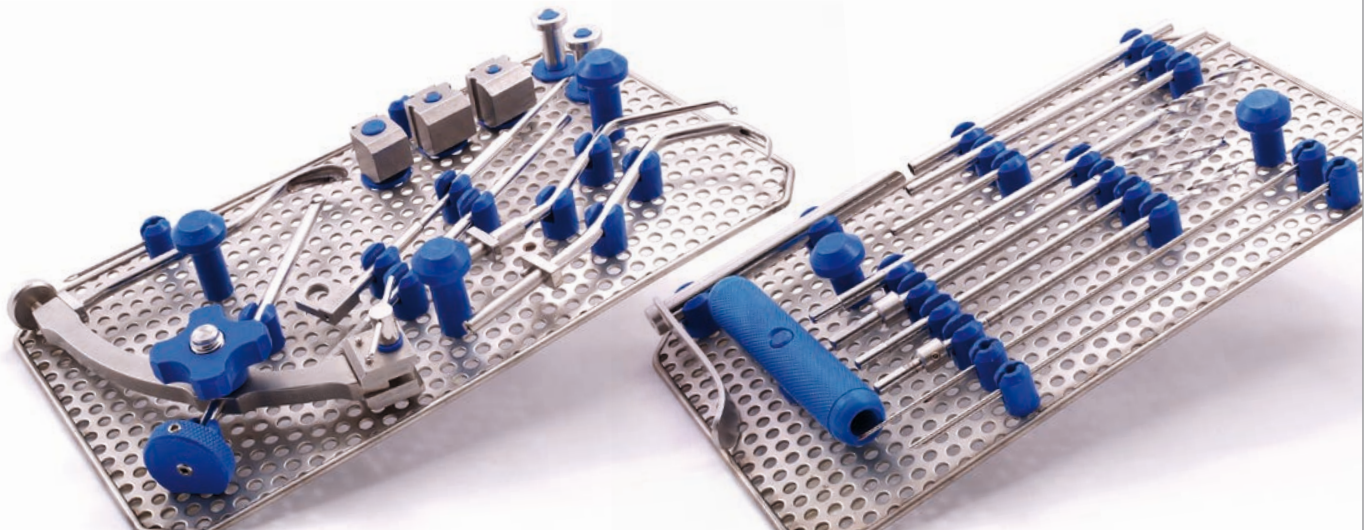


LARS PCL/multi-ligament set - 204.992

Part	Code
4.5mm Cannulated drill	204.068
5mm Cannulated drill	204.069
8mm Cannulated drill	204.075
9mm Cannulated drill	204.076
Cannulated drill bit 6 x 200 int dia 2.2mm - U01151	204.051
Cannulated drill bit 7.5 x 250 int dia 2.2mm - U01159	204.049
Drill bit 3.5mm x 150mm	204.026
Drill bit dia 6 x 200mm with spike & stopper D01011 & U01103	204.052
Drill bit dia 7.5 x 200mm with spike & stopper D21010 & U01112	204.053
Drill bit guide int. dia 10mm - D21008	204.059
Drill bit guide int. dia 8mm - D21009	204.058
Drilling guide dia 12mm - D21005	204.060
Drilling guide dia 6mm - D21003	204.062
Drilling guide dia 7.5mm - D21004	204.061
Femoral hook - C21017	204.063
Guide - B21001	204.065
K-Wire dia 2 x 250mm 2 trocar ends - U01003	104.201
K-Wire dia 2 x 250mm blunt ends - U01004	104.202
K-Wire dia 3 x 250mm 1 trocar end for guide's tibial fixation - U01015	104.304
Ligament cutter - ACPL02	204.020
Ligament traction - retractor handle - U02456	204.014
Postero-externe hook - C21014	204.064
Screwdriver - ATVS35	204.001
Staple extractor - AEAG01	204.036
Staple impactor - AIAG01	204.035
Telescopic tube L 140mm - retractor - U01304	204.013
Telescopic tube L 160mm - U01253	204.040

LARS PCL/multi-ligament set - 204.992 continued

Part	Code
Telescopic tube L 180mm - U01252	204.041
Telescopic tube L 200mm - U01251	204.047
Hook wire-passer (PLY) - D21013	204.054
Wire loop - U014011 x5	204.008
Wire loop passing canula for pli (6mm) - D21014	204.055
Curver wire-passer canula - D21011	204.057
7.5mm Reduction for curved wire-passer canula - D21012	204.056
Box details	
Tray - D21030	204.912A
Tray - D21031	204.912B
Outer box	204.901



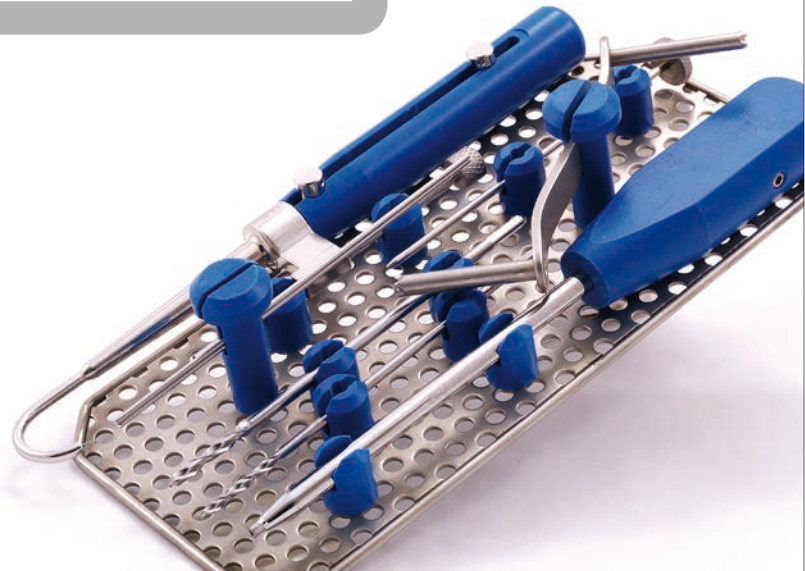
LARS rotator cuff and hip set 204.995

Part	Code
4.5mm Drill – U01101	204.031
Body – marked as ACR 03 No 08	204.072
Guide Ø4.5mm	204.071
Handle	204.073
K-Wire Ø3 x 80mm, 1 trocar	104.306
K-Wire Ø2 x 150mm, blunt	104.207
LARS screwdriver	204.001
Wire loop pack of 5	204.008
Wire loop passing canula Ø4.5mm	204.070
3.5mm Drill	204.026
4.5mm Cannulated drill	204.068
LARS ligament puller	204.014
Box details	
Outer box	204.902
Tray - D29001	204.915



LARS acromioclavicular set 204.997

Part	Code
Drift - D03002	204.023
Drill bit Ø3.5 X 150mm - U01110	204.026
Drill bit Ø4.5 X 150mm - U01101	204.025
Drilling guide - D03003	204.066
Guide - B24000	204.022
K-Wire Ø2 X 150mm blunt ends	104.207
Screwdriver - ATVS35	204.001
Wire loop - U014011 x5	204.008
Wire passer canula - D03001	204.024
Box details	
Outer box	204.902
Tray - D24001	204.917



LARS ankle set 204.998

Part	Code
LARS screwdriver	204.001
6mm Cannulated drill	204.051
Wire loop pack of 5	204.008
Ligament pin 2 x 250mm – pointed	104.201
Ligament pin 2 x 250mm – blunt	104.202
Ligament puller handle	204.014
4.5mm Cannulated drill	204.068
5mm Cannulated drill	204.069
Trocar point	204.074
Box details	
Outer box	299.510



LARS patella tendon/quads/tumour set 204.996

Part	Code
3.5mm x 150mm drill bit	204.026
4.5mm x 150mm drill bit	204.025
4.5mm Cannulated drill	204.068
5mm Cannulated drill	204.069
6mm Cannulated drill – U01151	204.051
LARS screwdriver	204.001
Ligament pin 2 x 250mm – pointed – U01003	104.201
Ligament pin 2 x 250mm – blunt – U01004	104.202
Staple impactor – AIAG01	204.035
Wire loop pack of 5 – U014011	204.008
Box details	
Outer box	299.510

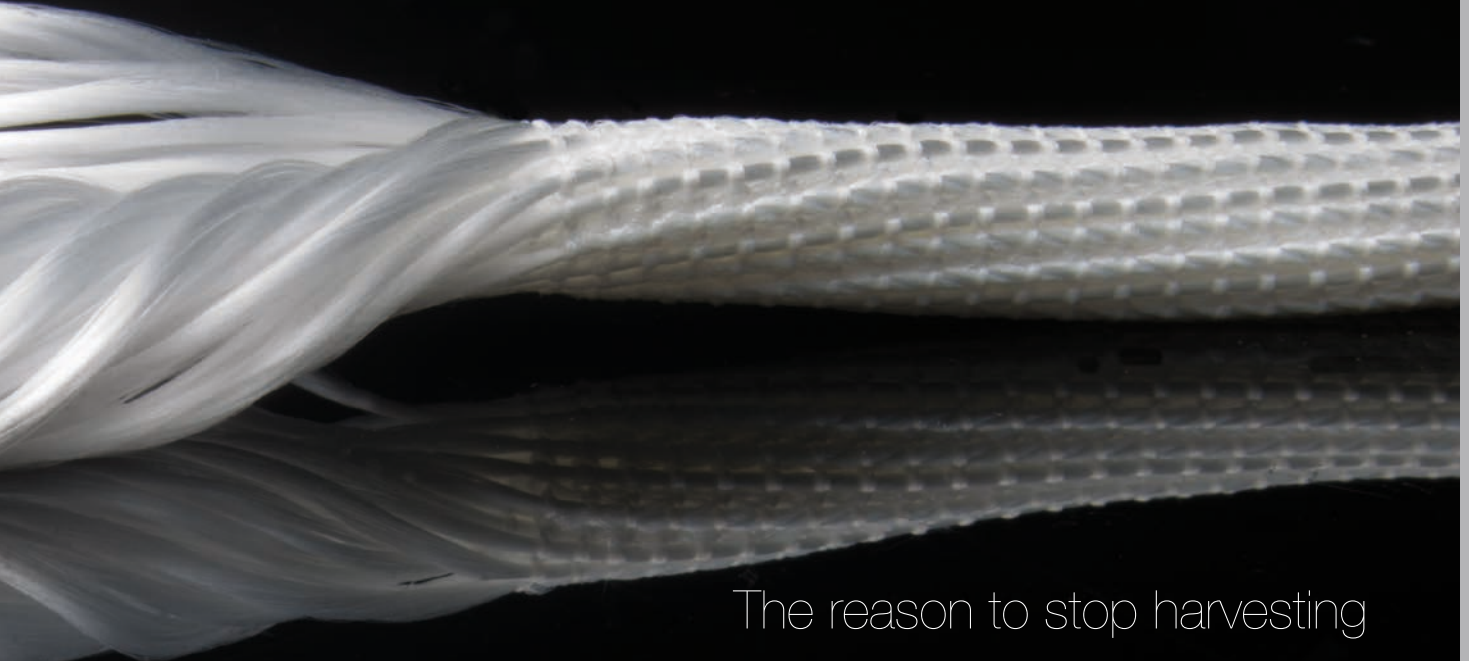


LARS™



References:

1. Yu SB, Dong QR, Wang YB, Zuo ZN, Li DG. Histological characteristics and ultrastructure of polyethylene terephthalate LARS ligament following the reconstruction of anterior cruciate ligament in rabbits. *Zhongguo Zuzhi Gongcheng Yanjiu yu Linchuang Kangfu*, 2008;12(36):7061-7066.
2. Trieb K, Blahovec H, Brand G, Sabeti M, Dominkus M, Kotz R. In vivo and in vitro cellular growth into a new generation of artificial ligaments. *European Surgical Research*, 2004;36:148-151.
3. Tarbrizian M, Leroy-Gallisot A, Yahia L. Technical Report: Evaluation of Synthetic LARS knee ligaments. Biomechanics and Biomaterials Research Group, École Polytechnique de Montréal, pp. 1-34.
4. Gao et al. Anterior cruciate ligament reconstruction with LARS artificial ligament: a multicentre study with 3 to 5 year follow up. *Arthroscopy: The Journal of Arthroscopic and Related Surgery*, 2010;26(4):515-523.
5. Huang JM, Wang Q, Wang ZM, Kang YF. Cruciate ligament reconstruction using the LARS artificial for reconstruction using LARS artificial ligaments under arthroscopy: 81 cases report. *Chinese Medical Journal*, 2010;123(2):160-164.
6. Lui ZT, Zhang XL, Jiang Y. Four-strand hamstring tendon autograft versus LARS artificial ligament for anterior cruciate ligament reconstruction. *International Orthopaedics*, 2010;34(1):45-49.
7. Cerulli G, Caraffa A, Antenucci R, Antinolfi P. Illegamento artificiale. *Giornale Italiano di Ortopedia e Traumatologia*, 2007;33(1):238-242.



The reason to stop harvesting

www.larsligaments.com

The Corinium Centre,
Cirencester, GL7 1YJ, UK
t: +44(0)1285 659 866
f: +44(0)1285 658 960
e: info@coringroup.com

www.coringroup.com

JointResponse,
Corin, The Corinium Centre,
Cirencester, GL7 1YJ
United Kingdom
t: +44 (0)1285 884 777
f: +44 (0)1285 884 776
e: jointresponse@coringroup.com

Corin

 **JointResponse**
Corin loan service



Printed on Coccoon 100 which contains 100% total recycled fibre and is produced at a mill which holds the ISO 14001 for Environmental Management Systems. The pulp is bleached using Elemental Chlorine Free processes.

©2011 Corin P No I1163 Rev3 10/2014 ECR 13543